



# ***Easy Identification for Tough Environments***



**Rigid Metal Conduit Now Available in Color!**

## ***Applications***

*Outdoors  
Highly corrosive  
environments  
Manufacturing facilities  
Energy plants  
...and more!*

Wheatland Tube's rigid metal conduit comes in eight vivid colors, making it the easiest way to identify critical systems in any tough environment. The vibrant powder-coated finish won't crack, flake or peel during conduit bending. And the UV protective coating prevents fading, even when continuously exposed to direct sunlight. Plus, the hot-dip galvanization protects both the ID and the OD from corrosion. RMC is available in color in trade sizes ½-4.

**Add your customized Call To Action here.  
Add your customized Call To Action here.**

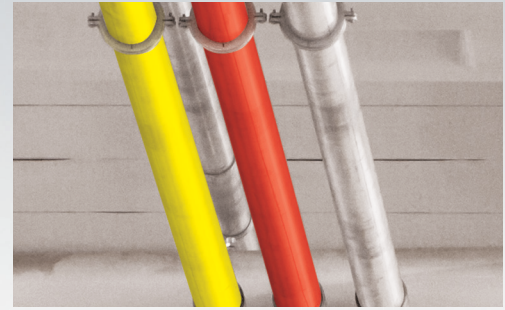


**Wheatland** Tube  
A DIVISION OF ZEKELMAN INDUSTRIES



# Rigid Metal Conduit Now Available in Color!

Now you can get Wheatland Tube's rigid metal conduit in eight vivid colors. Don't waste time spray-painting or taping when you can get RMC in color. It's made to order, with a quick turnaround.



## RIGID METAL CONDUIT WEIGHTS AND DIMENSIONS (10' LENGTHS)

TRADE SIZE	METRIC DESIGNATOR	THREADS/ INCH	WEIGHT PER 100 FT.		NOMINAL OUTSIDE DIAMETER		NOMINAL INSIDE DIAMETER	
			lbs.	kg	in.	mm	in.	mm
½	16	14	82	37.2	0.840	21.34	0.632	16.05
¾	21	14	109	49.4	1.050	26.67	0.836	21.23
1	27	11½	161	73.0	1.315	33.40	1.063	27.00
1¼	35	11½	218	98.9	1.660	42.16	1.394	35.41
1½	41	11½	263	119.3	1.900	48.26	1.624	41.25
2	53	11½	350	158.8	2.375	60.33	2.083	52.91
2½	63	8	559	253.6	2.875	73.03	2.489	63.22
3	78	8	727	329.8	3.500	88.90	3.090	78.49
3½	91	8	880	399.2	4.000	101.60	3.570	90.68
4	103	8	1030	467.2	4.500	114.30	4.050	102.87

Applicable tolerances: Outside diameter ½-1½: ±0.015" (16-41: ±0.38 mm), 2-6 (53-155): ± 1%.

## RIGID METAL CONDUIT PACKAGING (10' LENGTHS)

TRADE SIZE	METRIC DESIGNATOR	THREAD PROTECTOR COLOR	QUANTITY/ BUNDLE			QUANTITY/LIFT*			WEIGHT/LIFT		VOLUME/LIFT	
			ft.	m	Pieces	Bundles	ft.	m	lbs.	kg	cu. ft.	cu. m
½	16	Black	100	30.5	—	25	2500	762	2050	929.9	19.4	0.6
¾	21	Red	50	15.2	—	40	2000	610	2180	988.8	26.7	0.8
1	27	Blue	50	15.2	—	25	1250	381	2013	913.1	22.2	0.6
1¼	35	Red	—	—	90	—	900	274	1962	889.9	28.3	0.8
1½	41	Black	—	—	80	—	800	244	2104	954.4	27.2	0.8
2	53	Blue	—	—	60	—	600	183	2100	952.5	36.1	1.0
2½	63	Black	—	—	37	—	370	113	2068	938.0	35.0	1.0
3	78	Blue	—	—	30	—	300	91	2181	989.3	41.5	1.2
3½	91	Black	—	—	25	—	250	76	2200	997.9	43.3	1.2
4	103	Blue	—	—	20	—	200	61	2060	934.4	48.6	1.4

\* The quantity per lift conforms to the National Electrical Manufacturers Association Standards Publication RN-2, Packaging of Master Bundles for Steel Rigid Metal Conduit, Intermediate Metal Conduit (IMC) and Electrical Metallic Tubing (EMT). Pack quantities for Canadian distribution do not comply with NEMA RN-2.

## SPECIFICATIONS FOR POWDER COATING

PENCIL HARDNESS	ASTM D3363 H-4H
WEATHERING	1,000+ hours
GLOSS	ASTM D523 60% 30-99
ADHESION	ASTM 3359-5B 100%

## AVAILABLE IN 8 COLORS



**Wheatland Tube**  
A DIVISION OF ZEKELMAN INDUSTRIES

WEL-022823