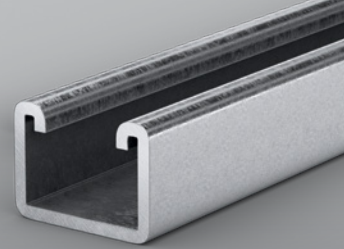


# ZI-Strut™

## Submittal Sheet



Wheatland Tube's ZI-Strut is made with cold-roll-formed, structural grade carbon steel and engineered with half-slot construction. ZI-Strut is interchangeable with industry-standard 1 5/8" channel profiles.

### Specifications

ZI-Strut conforms to ASTM A1011 for hot-rolled steel and ASTM A653 for continuous pre-galvanized steel.

### Finish

To prevent corrosion, ZI-Strut is made from steel pre-galvanized to the G90 coating thickness designation of 0.9 oz./ft.<sup>2</sup> as specified in ASTM A653. The galvanized channel has a smooth and uniform surface finish.

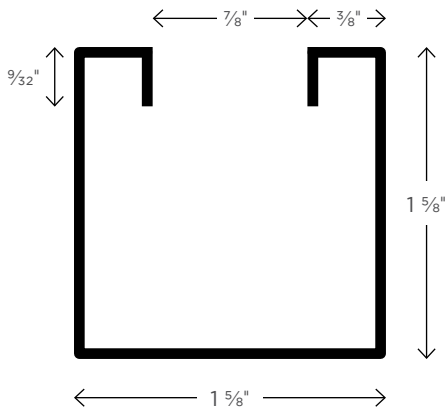
### Perforation

ZI-Strut is constructed with 1 1/8" x 9/16" slots punched on 2" centers.

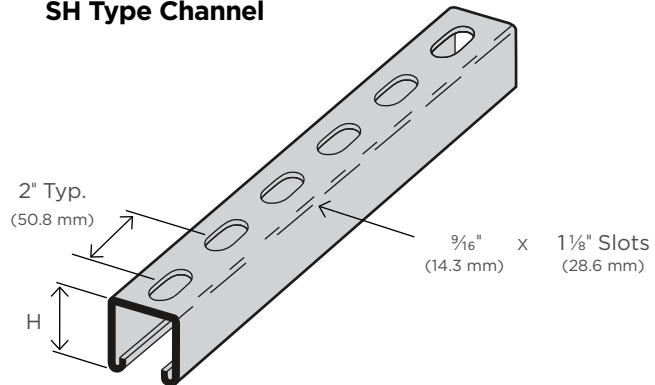
### Dimensional Tolerances

Width and height ± 0.015"  
 Length ± 1/8"  
 Twist ± 3°  
 Chamber and bow ± 3/16"

### Example



### SH Type Channel



## ZI-STRUT WEIGHTS AND DIMENSIONS (10' LENGTHS)

WIDTH	HEIGHT	GAUGE	SLOT PATTERN	SLOT DIMENSION	SLOT CENTER DISTANCE	WEIGHT / FT.
in.	in.			in.	in.	lbs.
1 5/8	1 5/8	12	half-slot	9/16 x 1 1/8	2	1.82
1 5/8	1 3/16	14	half-slot	9/16 x 1 1/8	2	0.91

## SUBMITTAL INFORMATION

PROJECT: \_\_\_\_\_ CONTRACTOR: \_\_\_\_\_ DATE: \_\_\_\_\_

ENGINEER: \_\_\_\_\_ SPECIFICATION REFERENCE: \_\_\_\_\_ SYSTEM TYPE: \_\_\_\_\_

LOCATIONS: \_\_\_\_\_ COMMENTS: \_\_\_\_\_

WEL-031422