

Mechanical Steel Tubing — Solar Applications




Solar Applications

Mechanical Steel Tubing

Wheatland Tube is your best source for steel tubing to support your solar applications. We've been manufacturing welded tubing since 1930 and are a leader in steel tubular products across multiple industries — including structural, electrical, piping, and oil and gas. Whatever the needs of your solar project, Wheatland's expertise and cost-effective solutions are sure to meet your performance requirements.

50 ksi minimum yield strength for greater design flexibility

Produced to ASTM A500 or ASTM A513 tube specifications

SQUARE
0.625"-4.000" 

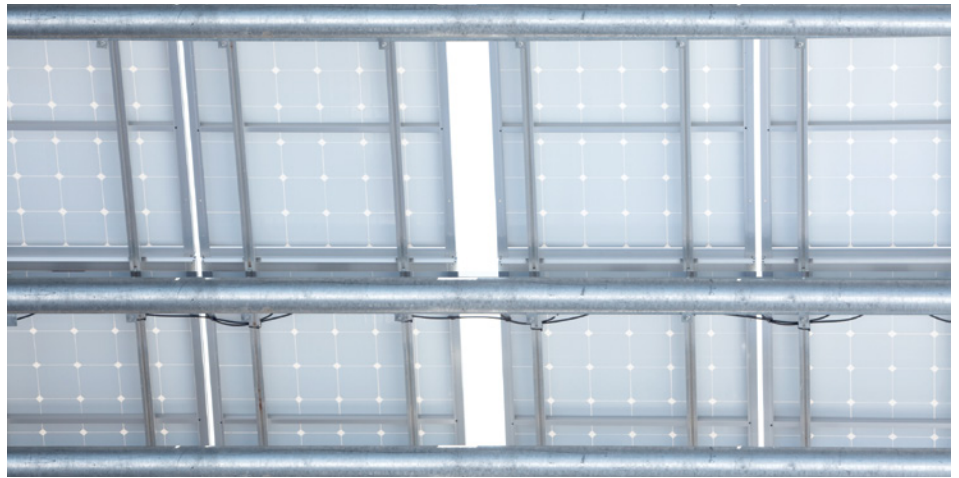
RECTANGLE
0.750" x 1.500"-
2.000" x 6.000" 

ROUND
0.706"-5.000" 

OCTAGON
4.783" 

WALL THICKNESS: **0.035"-0.220"**
MILL CUT LENGTHS: **5' or 40'**

Secondary cutting available for lengths under 5' or special tolerances.



The Highest Quality Standards

Our in-line galvanized mechanical tubing is manufactured in accordance with ASTM A513 Types 1 and 2, along with A500 specifications, and is offered flash-in or flash-controlled in a variety of galvanized finish options. Due to our cold-working and quenching process, we achieve higher strength properties, thereby providing you flexibility in your material specifications. Our galvanized products also comply with A1057 and A787 coating specifications. Wheatland Tube manufacturing locations' quality management systems are registered to ISO 9001:2008.

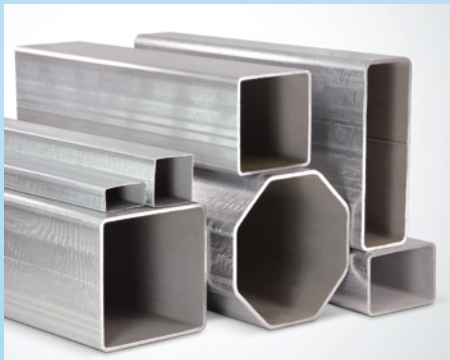
Value-added Services

Not only do we produce a wide variety of round, square or rectangular profiles, but Wheatland can also fulfill your tubular fabrication requirements. Wheatland's fabrication services could deliver completed parts directly to your job site. Value-added services include cutting, swaging, hole punching, bending, welding, tube laser and more — all available with single invoice billing. As a result, we are able to help you reduce your inventory, avoid multiple vendors and improve installation times with single sourcing for your racking material requirements.

For more information, call **800.733.5608** or visit **wheatland.com**

Solar Solutions

Whether you're building a racking system for ground-mounted or roof-mounted solar applications, Wheatland's galvanized mechanical tubing is the ideal solution.



Galvanized Tubing

Wheatland's galvanized mechanical tubing creates a tough, easy-to-handle product with superior corrosion resistance. It is triple coated using a high-grade zinc alloy, followed by a conversion coating designed to reduce white rust and a clear polymer that seals the tube, adding a bright, long-lasting shine. These coatings offer precision, toughness and long-lasting protection for our mechanical tubing.

Coating Options

Specify Wheatland's ThunderCoat™ or SURcoat mechanical tubing. Both offer triple-layer protection against corrosion and white rust.

ThunderCoat

When you need a tube that can withstand the elements on its own, choose Wheatland ThunderCoat. We apply a heavier zinc coating (0.6 oz. per square foot) in-line, making the tube perfect for outdoor applications or any environment that experiences high humidity.

SURcoat

Our SURcoat process (0.3 oz. per square foot) is ideal for indoor applications—or whenever you're liquid painting or powder coating for a smooth, consistent coating.





4435 S. Western Blvd.
Chicago, IL 60609

800.733.5608
info@wheatland.com
wheatland.com



Corporate Office

191 North Wacker Drive
Suite 2100
Chicago, IL 60606

312.275.1600
info@zekelman.com
zekelman.com

About Wheatland Tube Mechanical Tubing

Wheatland Tube produces a wide size range of mechanical tubing, ideal for flattened, fled or machined parts, and for uses that require superior surface finish and precise dimensions.

For more information, contact Wheatland Tube at:

800.733.5608 or **info@wheatland.com**

Or, visit our website at **wheatland.com**

Follow us on:



twitter.com/WheatlandTube



linkedin.com/company/zekelman-industries



youtube.com/ZekelmanIndustries



wheatland.com/blog