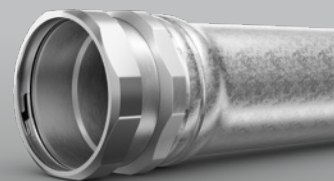


SmartCompression™ EMT

with Pre-installed Compression Coupling



SmartCompression EMT with pre-installed compression coupling saves time on every installation. It can be coupled 3x faster than standard couplings, and its smooth ID coating allows for faster wire pulling. SmartCompression EMT is available in trade sizes 2-4 and lengths of 10' and 20'.

Listing

SmartCompression EMT is listed to safety standards UL-797 and UL-514B for fittings.

SmartCompression EMT is manufactured in accordance with ANSI® C80.3.



Locations

SmartCompression EMT is concrete tight. It is ideal for use wherever compression couplings are specified or preferred. Raintight available upon request.

Coatings

SmartCompression EMT is galvanized with a clear top coat, and the compression fitting is zinc-electroplated to inhibit corrosion.

SMARTCOMPRESSION EMT WEIGHTS AND DIMENSIONS

TRADE SIZE	OD	ID*	WALL THICKNESS	MINIMUM WEIGHT EMT	COUPLING WEIGHT	MASTER BUNDLE QUANTITY	MASTER BUNDLE WEIGHT
	in.	in.	in.	lbs./ft.	lbs.	ft.	lbs.
2	2.197	2.067	0.065	1.400	0.480	500	723
2½	2.875	2.731	0.072	2.050	1.060	350	757
3	3.500	3.356	0.072	2.500	1.300	300	832
3½	4.000	3.834	0.083	3.250	1.540	250	891
4	4.500	4.334	0.083	3.700	1.790	250	1010

**For information only; not a standards requirement.*

SmartCompression EMT is listed to safety standards UL-797 and UL-514B, and manufactured in accordance with ANSI® C80.3.

All electrical systems must be installed per local code and AHJ requirements.

SUBMITTAL INFORMATION

PROJECT: _____ CONTRACTOR: _____ DATE: _____

ENGINEER: _____ SPECIFICATION REFERENCE: _____ SYSTEM TYPE: _____

LOCATIONS: _____ COMMENTS: _____

WEL-122023



1 Council Avenue, P.O. Box 608
Wheatland, PA 16161
P 800.257.8182
F 724.346.7260

info@wheatland.com
wheatland.com
Follow us on Twitter:
@WheatlandTube



Wheatland Tube
A ZEKELMAN COMPANY