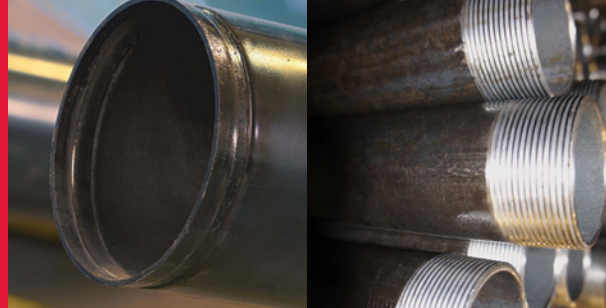


Fire Sprinkler Pipe

Mega-Flow and Mega-Thread

Submittal Data Sheet



FM Approved and Fully Listed Sprinkler Pipe

Wheatland Tube's Mega-Flow steel fire sprinkler pipe is FM Approved for roll-grooved, plain-end and welded joints for wet systems; and UL® and C-UL Listed and FM Approved for use with roll-grooved, swage groove, plain-end couplings and welded joints for wet, dry preaction and deluge systems. Mega-Thread is FM Approved for use in wet systems and is UL and C-UL Listed and FM Approved for wet, dry and preaction sprinkler systems.

Approvals and Specifications

Both products meet or exceed these standards:

- ASTM A795, Type E, Grade A
- NFPA® 13 and NFPA 14
- Mega-Thread is approved for standard hanger spacing

Manufacturing Protocols

Mega-Flow and Mega-Thread are subjected to the toughest possible testing protocols to ensure the highest quality and long-lasting performance.

Finishes and Coatings

Mega-Flow, like all Wheatland black steel fire sprinkler pipe, receives a proprietary mill coating to ensure a clean, corrosion-resistant surface that outperforms and outlasts standard lacquer coatings. This coating allows the pipe to be easily painted without special preparation. Mega-Thread is hot-dip galvanized to meet FM requirements for dry systems.

Product Marking

Each length of Wheatland fire sprinkler pipe is continuously stenciled to show the manufacturer, type of pipe, grade, size and length. Barcoding is acceptable as a supplementary identification method.

MEGA-FLOW SPECIFICATIONS

| NPS | NOM OD | NOM ID | | | UL CRR* | | MEGA-FLOW | |
|-----|--------|-----------|-------------|-------------|-----------|-------------|-----------------|-----------|
| | | Mega-Flow | Schedule 10 | Schedule 40 | Mega-Flow | Schedule 40 | Nominal wt./ft. | Pcs./Lift |
| 1¼ | 1.660 | 1.530 | 1.442 | 1.380 | 1.80 | 1.00 | 1.108 | 61 |
| 1½ | 1.900 | 1.740 | 1.682 | 1.610 | 2.64 | 1.00 | 1.556 | 61 |
| 2 | 2.375 | 2.215 | 2.157 | 2.067 | 2.14 | 1.00 | 1.961 | 37 |
| 2½ | 2.875 | 2.707 | 2.635 | 2.469 | 1.43 | 1.00 | 2.504 | 30 |
| 3 | 3.500 | 3.316 | 3.260 | 3.068 | 1.34 | 1.00 | 3.349 | 19 |
| 4 | 4.500 | 4.316 | 4.260 | 4.026 | 1.00 | 1.00 | 4.331 | 19 |
| 6 | 6.625 | 6.395 | 6.357 | 6.065 | 0.75 | 1.00 | 8.000 | 10 |

* Calculated using Standard UL CRR formula, UL Fire Protection Directory, Category VIZY. The CRR is a ratio value used to measure the ability of a pipe to withstand corrosion. Threaded Schedule 40 steel pipe is used as the benchmark (value of 1.0).

MEGA-THREAD SPECIFICATIONS

| NPS | NOM OD | NOM ID | | | UL CRR* | | MEGA-THREAD | |
|-----|--------|-------------|-------------|-------------|-------------|-------------|-----------------|-----------|
| | | Mega-Thread | Schedule 40 | Mega-Thread | Schedule 40 | L.W.T. Pipe | Nominal wt./ft. | Pcs./Lift |
| 1 | 1.315 | 1.079 | 1.049 | 1.00 | 1.00 | 0.61 | 1.462 | 70 |
| 1¼ | 1.660 | 1.416 | 1.380 | 1.00 | 1.00 | 0.39 | 1.989 | 51 |
| 1½ | 1.900 | 1.650 | 1.610 | 1.00 | 1.00 | 0.31 | 2.370 | 44 |
| 2 | 2.375 | 2.117 | 2.067 | 1.00 | 1.00 | 0.25 | 3.094 | 30 |

* Calculated using Standard UL CRR formula, UL Fire Protection Directory, Category VIZY. The CRR is a ratio value used to measure the ability of a pipe to withstand corrosion. Threaded Schedule 40 steel pipe is used as the benchmark (value of 1.0).



SUBMITTAL INFORMATION

PROJECT:

CONTRACTOR:

DATE:

ENGINEER:

SPECIFICATION REFERENCE:

SYSTEM TYPE:

LOCATIONS:

COMMENTS:

MEGA-FLOW — BLACK

MEGA-THREAD — HOT-DIP GALVANIZED

WFS-052920



1 Council Avenue, P.O. Box 608
Wheatland, PA 16161
P 800.257.8182
F 724.346.7260

info@wheatland.com
wheatland.com
Follow us on Twitter:
@WheatlandTube



Wheatland Tube
A DIVISION OF ZEKELMAN INDUSTRIES