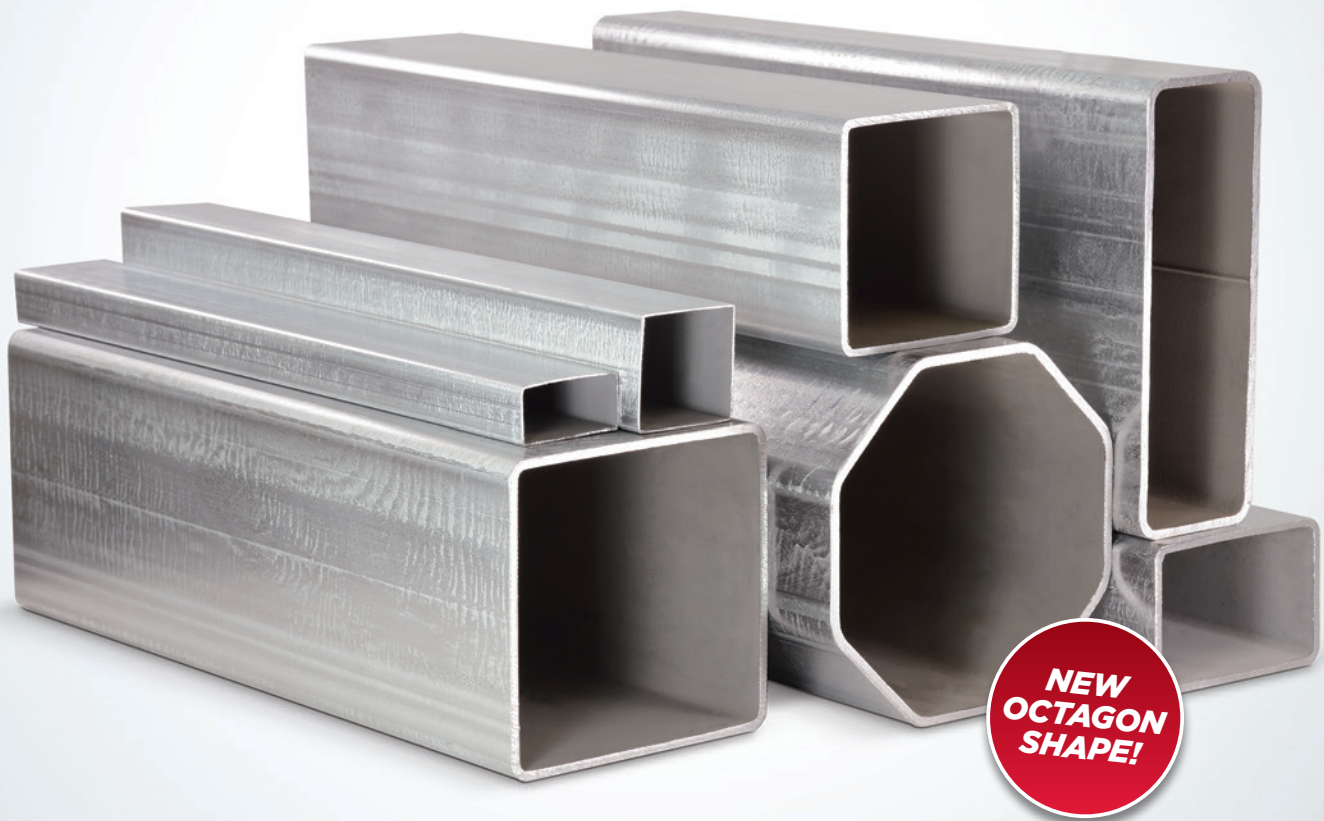




**Wheatland** Tube  
A DIVISION OF ZEKELMAN INDUSTRIES

# WIDEST ARRAY OF SHAPE PROFILES IN THE INDUSTRY



## Ideal applications for mechanical tubing include:

- ✓ Solar racking
- ✓ Agricultural and dairy products
- ✓ Greenhouses
- ✓ Playgrounds and recreation
- ✓ Carports and metal buildings
- ✓ Fabric structures

## The Perfect Fit

Every project is different, and Wheatland makes the right shape for every project. Our mechanical tubing provides excellent structural integrity. It's easy to fabricate, powder coat and weld—so you save on fabrication, installation labor costs and time.

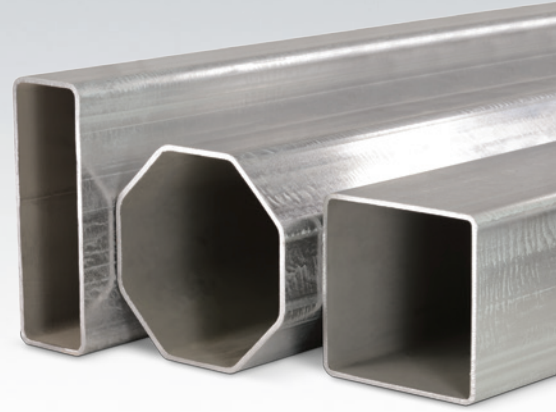
## Tough Protection for Demanding Applications

When you have a more demanding application that requires extra protection, specify Wheatland's SURcoat or ThunderCoat™ mechanical tubing. Both offer triple-layer protection against corrosion, and are engineered to be easy to fabricate, liquid paint or powder coat.

Wheatland's SURcoat process is ideal for indoor applications—or for whenever you're liquid painting or powder coating for a smooth, consistent coating. ThunderCoat is the best choice for outdoor applications or any higher-humidity environments. Even with a heavier coating, ThunderCoat withstands the rigors of various fabrication processes.

# Mechanical Tubing Capability Charts

Depending upon the gauge, our mechanical tubing can provide a minimum yield and tensile strength of 45/48 ksi, or 50/55 ksi, in order to meet your unique design challenges. Wheatland can also provide even higher-strength tubing, if needed.



## SQUARES

OD	GAUGE AND NOMINAL WALL THICKNESS															
	20 0.035	19 0.042	18 0.049	17 0.058	16 0.065	15 0.072	14 0.083	13 0.095	12 0.109	11 0.120	10 0.134	9 0.148	8 0.165	7 0.180	6 0.203	5 0.220
0.750																
0.813																
0.875																
1.000																
1.250																
1.500																
1.750																
2.000																
2.250																
2.500																
3.000																
4.000																

## RECTANGLES

OD	GAUGE AND NOMINAL WALL THICKNESS															
	20 0.035	19 0.042	18 0.049	17 0.058	16 0.065	15 0.072	14 0.083	13 0.095	12 0.109	11 0.120	10 0.134	9 0.148	8 0.165	7 0.180	6 0.203	5 0.220
0.750 x 1.500																
0.750 x 2.250																
1.000 x 2.000																
1.000 x 3.000																
1.500 x 2.000																
1.500 x 2.500																
1.500 x 3.000																
1.500 x 3.500																
1.750 x 2.750																
2.000 x 3.000																
2.000 x 4.000																
2.000 x 6.000																

## OCTAGONS **NEW!**

OD	GAUGE AND NOMINAL WALL THICKNESS															
	20 0.035	19 0.042	18 0.049	17 0.058	16 0.065	15 0.072	14 0.083	13 0.095	12 0.109	11 0.120	10 0.134	9 0.148	8 0.165	7 0.180	6 0.203	5 0.220
4.783																

 Indicates product availability

For more information, call **800.733.5608**

WME-051816