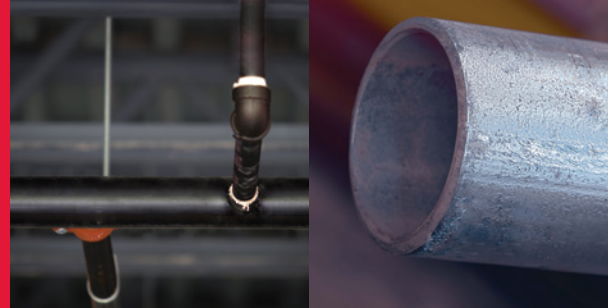


# Fire Sprinkler Pipe

MLT Black, Light Wall, Threadable  
and GL Galvanized, Light Wall, Threadable

## Submittal Data Sheet



### FM Approved and Fully Listed Sprinkler Pipe

Wheatland Tube's MLT and GL steel fire sprinkler pipe are FM Approved for wet systems and are UL® and C-UL Listed and FM Approved for wet, dry and preaction deluge systems.

### Approvals and Specifications

Both products meet or exceed the following standards:

- ASTM A795, Type E, Grade A for fire sprinkler applications up to 300 psi working pressure
- Threaded and welded fittings are approved in accordance with NFPA® 13

### Manufacturing Protocols

MLT and GL are subjected to the toughest possible testing protocols to ensure the highest quality and long-lasting performance.

### Finishes and Coatings

MLT, like all Wheatland black steel fire sprinkler pipe, receives a proprietary mill coating to ensure a clean, corrosion-resistant surface that outperforms and outlasts standard lacquer coatings. GL has a galvanized OD and is readily paintable.

### Product Marking

Each length of Wheatland fire sprinkler pipe is continuously stenciled to show the manufacturer, type of pipe, grade, size and length. Barcoding is acceptable as a supplementary identification method.

## MLT SPECIFICATIONS

NPS	NOM ID		UL THREADED CRR*			MLT	
	MLT	Schedule 40	MLT	Schedule 40	Mega-Thread	Nominal wt./ft.	Pcs./Lift
1	1.103	1.049	0.61	1.00	1.00	1.370	91
1¼	1.448	1.380	0.39	1.00	1.00	1.761	61
1½	1.688	1.610	0.31	1.00	1.00	2.033	61
2	2.153	2.067	0.25	1.00	1.00	2.686	37

\* Calculated using Standard UL CRR formula, UL Fire Protection Directory, Category VIZY. The CRR is a ratio value used to measure the ability of a pipe to withstand corrosion. Threaded Schedule 40 steel pipe is used as the benchmark (value of 1.0).

## GL SPECIFICATIONS

NPS	NOM ID		UL THREADED CRR*			GL	
	GL	Schedule 40	GL	Schedule 40	Mega-Thread	Nominal wt./ft.	Pcs./Lift
1	1.103	1.049	0.61	1.00	1.00	1.370	91
1¼	1.448	1.380	0.39	1.00	1.00	1.761	61
1½	1.688	1.610	0.31	1.00	1.00	2.033	61
2	2.153	2.067	0.25	1.00	1.00	2.686	37

\* Calculated using Standard UL CRR formula, UL Fire Protection Directory, Category VIZY. The CRR is a ratio value used to measure the ability of a pipe to withstand corrosion. Threaded Schedule 40 steel pipe is used as the benchmark (value of 1.0).



## SUBMITTAL INFORMATION

PROJECT:

---

CONTRACTOR:

---

DATE:

---

ENGINEER:

---

SPECIFICATION REFERENCE:

---

SYSTEM TYPE:

---

LOCATIONS:

---

COMMENTS:

---

MLT

GL

WFS-052920