

# Delivering Premium-quality Steel Sprinkler Pipe for Nearly a Century ... and Counting



## Wheatland Tube GL Galvanized Fire Sprinkler Pipe

Since 1931, Wheatland Tube has delivered the industry's most complete line of steel sprinkler pipe. Now, due to changes in the industry, Wheatland is the only manufacturer in the U.S. that produces an in-line galvanized product.

### Here's what makes Wheatland GL a superior choice:

- Made in the USA, our in-line, exterior zinc-coated threadable sprinkler pipe is 100% steel.
- A higher corrosion resistance ratio (CRR) makes our galvanized fire sprinkler pipe last longer—ideal for both exposed, open areas as well as indoor use.
- The nominal inside diameter (ID) provides improved hydraulics.
- We guarantee our premium-quality steel pipe is compatible with any fire protection system that uses 100% steel pipe.

Standing the test of time, our pipes speak for themselves. **Turn the page for product specifications.**



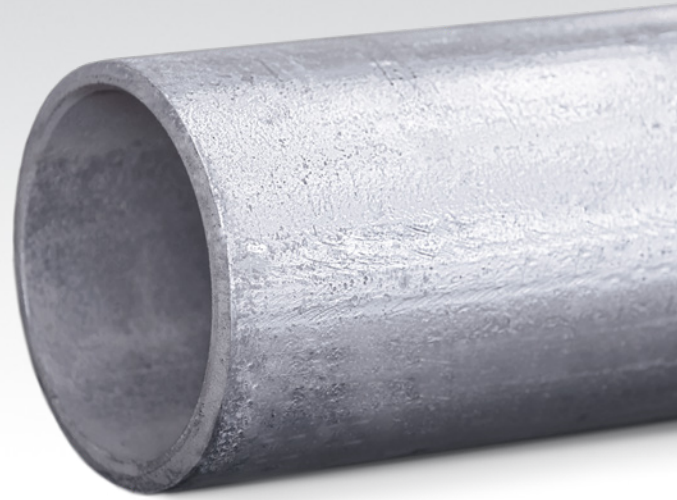
**Wheatland** Tube  
A DIVISION OF ZEKELMAN INDUSTRIES

GL Galvanized,  
Light Wall, Threadable

# Ideal for exposed, open areas

Wheatland's GL steel fire sprinkler pipe is an OD galvanized, lighter-wall, threadable product.

- Ideal for branch line use in wet, dry, preaction or deluge systems
- Comparable mechanical strength to Schedule 40
- Readily paintable galvanized exterior
- Reduces freight and installation costs



## TECHNICAL DATA CHART

NPS	NOM. ID	WT./FT. LBS.	WT./FT. H <sub>2</sub> O FILLED	PCS./LIFT	WT./LIFT 21'	WT./LIFT 24'	WT./LIFT 25'
1	1.103	1.370	1.701	91	2618	2992	3117
1¼	1.448	1.761	2.365	61	2256	2578	2686
1½	1.688	2.033	2.875	61	2604	2976	3100
2	2.153	2.686	4.142	37	2087	2385	2485

## SPECIFICATIONS

NPS	NOM. ID		UL THREADED CRR*			GL	
	GL	Schedule 40	GL	Schedule 40	Mega-Thread	Nominal wt./ft.	Pcs./Lift
1	1.103	1.049	0.61	1.00	1.00	1.370	91
1¼	1.448	1.380	0.39	1.00	1.00	1.761	61
1½	1.688	1.610	0.31	1.00	1.00	2.033	61
2	2.153	2.067	0.25	1.00	1.00	2.686	37

\* Calculated using Standard UL CRR formula, UL Fire Protection Directory, Category VIZY. The CRR is a ratio value used to measure the ability of a pipe to withstand corrosion. Threaded Schedule 40 steel pipe is used as the benchmark (value of 1.0).

### GL meets or exceeds these standards:

- ASTM A795, Type E, Grade A for fire sprinkler applications up to 300 psi working pressure
- Threaded and welded fittings are approved in accordance with NFPA 13
- UL, C-UL and FM Listed for wet, dry and preaction deluge systems
- FM Approved for use in wet systems

Wheatland products can also be produced from steel that is made and melted in the United States upon request.

WFS-052820