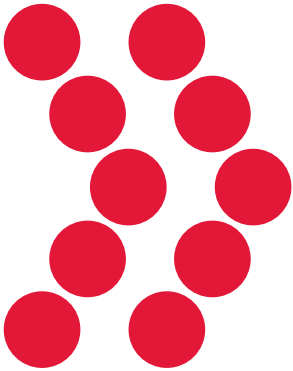




Steel Fire Sprinkler Pipe





Wheatland Tube

Fire Sprinkler Products

Wheatland Tube began producing steel fire sprinkler pipe in 1931, and today offers the most complete line of products in the industry. Engineers and contractors across the continent depend on us for steel fire sprinkler pipe and a number of proprietary products — always in stock and ready to deliver.

100% Compatibility

We guarantee our steel pipe is 100% compatible with fire protection systems that use only steel pipe. Why risk incompatibility? Wheatland's complete line of steel sprinkler pipe makes design easy and brings you peace of mind.*

Accurate and Efficient

Our products help you work safer and smarter — not harder. With our extensive in-house capabilities, we offer the shortest production cycle times in the industry, and we deliver to you accurately and on time, every time.

*Wheatland Tube has never warranted compatibility between its steel pipe products and CPVC products.

Green and Sustainable

Our steel fire sprinkler pipe contains recycled steel and provides decades of reliable service. At the end of its life, the steel may be almost fully recycled, supporting your green policies.

Zekelman Industries

Wheatland Tube is a division of Zekelman Industries, the largest independent manufacturer of steel hollow structural sections (HSS) and steel pipe in North America. We leverage our 100-plus years of pipe and tube manufacturing experience and expertise to produce 2 million tons of pipe and tube annually. Backed by Zekelman Industries, you can count on Wheatland for **strength, innovation and service** — bringing exceptional value to your business.

Schedule 10 and Schedule 40

High quality, high performance

Wheatland's Schedule 10 and Schedule 40 steel fire sprinkler pipe are subjected to the toughest possible testing to ensure the highest possible quality – not to mention reliable, long-lasting performance.

TECHNICAL DATA

| NPS | NOM ID | WT./FT. (LBS.) | WT./FT. H ₂ O FILLED | PCS./LIFT | WT./LIFT 21' | WT./LIFT 24' | WT./LIFT 25' |
|-----|--------|----------------|---------------------------------|-----------|--------------|--------------|--------------|
| 1¼ | 1.442 | 1.807 | 2.514 | 61 | 2315 | 2645 | 2756 |
| 1½ | 1.682 | 2.087 | 3.049 | 61 | 2673 | 3055 | 3183 |
| 2 | 2.157 | 2.640 | 4.222 | 37 | 2051 | 2344 | 2442 |
| 2½ | 2.635 | 3.534 | 5.895 | 30 | 2226 | 2544 | 2651 |
| 3 | 3.260 | 4.336 | 7.949 | 19 | 1730 | 1977 | 2060 |
| 4 | 4.260 | 5.619 | 11.789 | 19 | 2242 | 2562 | 2669 |
| 5 | 5.295 | 7.780 | 17.309 | 13 | 2124 | 2427 | 2529 |
| 6 | 6.357 | 9.298 | 23.038 | 10 | 1953 | 2232 | 2325 |
| 8 | 8.249 | 16.960 | 40.086 | 7 | 2493 | 2849 | 2968 |

Proprietary mill coating ensures clean, corrosion-resistant surface

Outperforms and outlasts standard lacquer-coated pipe

Easily painted, without special preparation

Available with hot-dip galvanizing

Also available in black

SCHEDULE 10 SPECIFICATIONS

| NPS | NOM OD | | NOM ID | | NOMINAL WALL | | NOMINAL WEIGHT | | UL CRR* | PIECES Lift |
|-----|--------|-------|--------|-------|--------------|------|----------------|-------|---------|-------------|
| | in. | mm | in. | mm | in. | mm | lbs./ft. | kg/m | | |
| 1¼ | 1.660 | 42.2 | 1.442 | 36.6 | 0.109 | 2.77 | 1.81 | 2.69 | 7.3 | 61 |
| 1½ | 1.900 | 48.3 | 1.682 | 42.7 | 0.109 | 2.77 | 2.09 | 3.11 | 5.8 | 61 |
| 2 | 2.375 | 60.3 | 2.157 | 54.8 | 0.109 | 2.77 | 2.64 | 3.93 | 4.7 | 37 |
| 2½ | 2.875 | 73.0 | 2.635 | 66.9 | 0.120 | 3.05 | 3.53 | 5.26 | 3.5 | 30 |
| 3 | 3.500 | 88.9 | 3.260 | 82.8 | 0.120 | 3.05 | 4.34 | 6.46 | 2.6 | 19 |
| 4 | 4.500 | 114.3 | 4.260 | 108.2 | 0.120 | 3.05 | 5.62 | 8.37 | 1.6 | 19 |
| 5 | 5.563 | 141.3 | 5.295 | 134.5 | 0.134 | 3.40 | 7.78 | 11.58 | 1.5 | 13 |
| 6 | 6.625 | 168.3 | 6.357 | 161.5 | 0.134 | 3.40 | 9.30 | 13.85 | 1.0 | 10 |
| 8 | 8.625 | 219.1 | 8.249 | 209.5 | 0.188 | 4.78 | 16.96 | 25.26 | 2.1 | 7 |

* Calculated using Standard UL CRR formula, UL Fire Protection Directory, Category VIZY. The CRR is a ratio value used to measure the ability of a pipe to withstand corrosion. Threaded Schedule 40 steel pipe is used as the benchmark (value of 1.0).

WEIGHTS AND DIMENSIONS

| NOMINAL SIZE | OD in. | SCHEDULE 40 | | |
|--------------|--------|-------------|--------------|---------------------------------|
| | | Wall Inches | Wt. lbs./ft. | Wt./Ft. H ₂ O Filled |
| 1 | 1.315 | 0.133 | 1.68 | 2.055 |
| 1¼ | 1.660 | 0.140 | 2.27 | 2.922 |
| 1½ | 1.900 | 0.145 | 2.72 | 3.602 |
| 2 | 2.375 | 0.154 | 3.66 | 5.109 |
| 2½ | 2.875 | 0.203 | 5.80 | 7.871 |
| 3 | 3.500 | 0.216 | 7.58 | 10.783 |
| 3½ | 4.000 | 0.226 | 9.12 | — |
| 4 | 4.500 | 0.237 | 10.80 | 16.311 |
| 5 | 5.563 | 0.258 | 14.63 | 23.262 |
| 6 | 6.625 | 0.280 | 18.99 | 31.498 |

SCHEDULE 40 SPECIFICATIONS

| NPS | NOM OD | | NOM ID | | NOMINAL WALL | | NOMINAL WEIGHT | | UL CRR* | PIECES Lift |
|-----|--------|------|--------|------|--------------|------|----------------|------|---------|-------------|
| | in. | mm | in. | mm | in. | mm | lbs./ft. | kg/m | | |
| 1 | 1.315 | 33.4 | 1.049 | 26.6 | 0.133 | 3.38 | 1.68 | 2.50 | 1.00 | 70 |
| 1¼ | 1.660 | 42.2 | 1.380 | 35.1 | 0.140 | 3.56 | 2.27 | 3.39 | 1.00 | 51 |
| 1½ | 1.900 | 48.3 | 1.610 | 40.9 | 0.145 | 3.68 | 2.72 | 4.05 | 1.00 | 44 |
| 2 | 2.375 | 60.3 | 2.067 | 52.5 | 0.154 | 3.91 | 3.66 | 5.45 | 1.00 | 30 |

* Calculated using Standard UL CRR formula, UL Fire Protection Directory, Category VIZY. The CRR is a ratio value used to measure the ability of a pipe to withstand corrosion. Threaded Schedule 40 steel pipe is used as the benchmark (value of 1.0).

Schedule 10 and Schedule 40 Meet or Exceed These Standards:

- ASTM A135, Type E, Grade A (Schedule 10)
- ASTM A795, Type E, Grade A (Schedule 40)
- UL and C-UL Listed
- FM Approved
- NFPA 13

Mega-Flow



Greater hydraulics, greater value

Wheatland's Mega-Flow is an engineered, light-wall steel sprinkler pipe that offers ID up to 7% larger than Schedule 10 and 11% larger than Schedule 40 for improved hydraulics. Mega-Flow saves freight, labor and installation costs with standard hanger spacing (15') and standard and custom lengths. With its proprietary mill coating, Mega-Flow is an excellent alternative to standard wall products so you can downsize your entire sprinkler system with the same or greater quality.

ID up to 7% larger than Schedule 10 and 11% larger than Schedule 40

Saves freight, labor and installation costs

Standard hanger spacing (15')

Available in standard lengths; custom lengths can be ordered

Roll groove available from mill inventory

Proprietary mill coating provides superior primer for painting

TECHNICAL DATA

| NPS | NOM ID | WT./FT. (LBS.) | WT./FT. H ₂ O FILLED | PCS./LIFT | WT./LIFT 21' | WT./LIFT 24' | WT./LIFT 25' |
|-----|--------|----------------|---------------------------------|-----------|--------------|--------------|--------------|
| 1¼ | 1.530 | 1.108 | 1.904 | 61 | 1419 | 1622 | 1690 |
| 1½ | 1.740 | 1.556 | 2.586 | 61 | 1993 | 2278 | 2373 |
| 2 | 2.215 | 1.961 | 3.631 | 37 | 1524 | 1741 | 1814 |
| 2½ | 2.707 | 2.504 | 4.998 | 30 | 1578 | 1803 | 1878 |
| 3 | 3.316 | 3.349 | 7.090 | 19 | 1336 | 1527 | 1591 |
| 4 | 4.316 | 4.331 | 10.669 | 19 | 1728 | 1975 | 2057 |
| 6 | 6.395 | 8.000 | 21.900 | 10 | 1680 | 1920 | 2000 |

SPECIFICATIONS

| NPS | NOM OD | NOM ID | | UL CRR* | | MEGA-FLOW | | |
|-----|--------|-----------|-------------|-------------|-----------|-------------|-----------------|-----------|
| | | Mega-Flow | Schedule 10 | Schedule 40 | Mega-Flow | Schedule 40 | Nominal wt./ft. | Pcs./Lift |
| 1¼ | 1.660 | 1.530 | 1.442 | 1.380 | 1.80 | 1.00 | 1.108 | 61 |
| 1½ | 1.900 | 1.740 | 1.682 | 1.610 | 2.64 | 1.00 | 1.556 | 61 |
| 2 | 2.375 | 2.215 | 2.157 | 2.067 | 2.14 | 1.00 | 1.961 | 37 |
| 2½ | 2.875 | 2.707 | 2.635 | 2.469 | 1.43 | 1.00 | 2.504 | 30 |
| 3 | 3.500 | 3.316 | 3.260 | 3.068 | 1.34 | 1.00 | 3.349 | 19 |
| 4 | 4.500 | 4.316 | 4.260 | 4.026 | 1.00 | 1.00 | 4.331 | 19 |
| 6 | 6.625 | 6.395 | 6.357 | 6.065 | 0.75 | 1.00 | 8.000 | 10 |

* Calculated using Standard UL CRR formula, UL Fire Protection Directory, Category VIZY. The CRR is a ratio value used to measure the ability of a pipe to withstand corrosion. Threaded Schedule 40 steel pipe is used as the benchmark (value of 1.0).

Mega-Flow Meets or Exceeds These Standards:

- ASTM A795, Type E, Grade A
- UL and C-UL Listed and FM Approved for use with roll grooved, swage grooved, plain-end couplings and welded joints for wet, dry preaction and deluge systems
- FM Approved for roll grooved, plain-end and welded joints for wet systems
- NFPA 13 and NFPA 14

Mega-Thread

Greater hydraulics, greater value

Wheatland's Mega-Thread is an engineered, light-wall steel sprinkler pipe that offers ID 3.6% larger than Schedule 40 for superior flow. Mega-Thread saves costs in threadable applications and can be joined by screwed, grooved or plain-end fittings, or welded. With its proprietary mill coating, Mega-Thread is an excellent Schedule 40 alternative that threads smoothly and easily so you can downsize your entire sprinkler system with the same or greater quality.

ID 3.6% larger than
Schedule 40

Saves costs in
threadable applications

Superior flow
characteristics

Can be joined by
screwed, grooved
or plain-end
fittings, or welded

Threads smoothly
and easily; requires
no thread warning

Proprietary mill coating
extends shelf life,
makes painting quicker
and easier

Approved for standard
hanger spacing

TECHNICAL DATA

| NPS | NOM ID | WT./FT. (LBS.) | WT./FT. H ₂ O FILLED | PCS./LIFT | WT./LIFT 21' | WT./LIFT 24' | WT./LIFT 25' |
|-----|--------|-------------------|------------------------------------|-----------|-----------------|-----------------|-----------------|
| 1 | 1.087 | 1.462 | 1.865 | 70 | 2149 | 2456 | 2559 |
| 1¼ | 1.416 | 1.989 | 2.674 | 51 | 2130 | 2435 | 2536 |
| 1½ | 1.650 | 2.370 | 3.297 | 44 | 2190 | 2503 | 2607 |
| 2 | 2.117 | 3.094 | 4.621 | 30 | 1949 | 2228 | 2321 |

SPECIFICATIONS

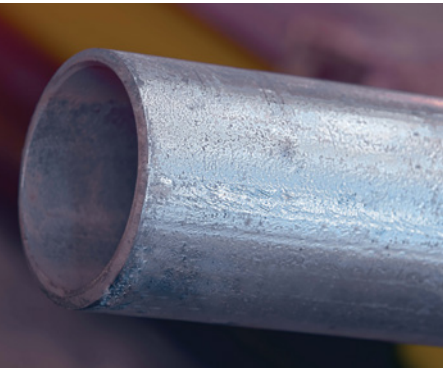
| NPS | NOM OD | NOM ID | | UL CRR* | | | MEGA-THREAD | |
|-----|--------|-------------|-------------|-------------|-------------|-------------|-----------------|-----------|
| | | Mega-Thread | Schedule 40 | Mega-Thread | Schedule 40 | L.W.T. Pipe | Nominal wt./ft. | Pcs./Lift |
| 1 | 1.315 | 1.087 | 1.049 | 1.00 | 1.00 | 0.61 | 1.462 | 70 |
| 1¼ | 1.660 | 1.416 | 1.380 | 1.00 | 1.00 | 0.39 | 1.989 | 51 |
| 1½ | 1.900 | 1.650 | 1.610 | 1.00 | 1.00 | 0.31 | 2.370 | 44 |
| 2 | 2.375 | 2.117 | 2.067 | 1.00 | 1.00 | 0.25 | 3.094 | 30 |

* Calculated using Standard UL CRR formula, UL Fire Protection Directory, Category VIZY. The CRR is a ratio value used to measure the ability of a pipe to withstand corrosion. Threaded Schedule 40 steel pipe is used as the benchmark (value of 1.0).

Mega-Thread Meets or Exceeds These Standards:

- ASTM A795, Type E, Grade A
- UL and C-UL Listed and FM Approved for wet, dry and preaction sprinkler systems
- Hot-dip galvanized finish meets FM requirements for dry systems
- NFPA 13 and NFPA 14
- Rated 300 psi working pressure

GL Galvanized, Light Wall, Threadable



Ideal for exposed, open areas

Wheatland's GL steel fire sprinkler pipe is an OD galvanized, lighter-wall, threadable product. The nominal OD provides improved hydraulics – resulting in an exceptional value.

Ideal for branch line use in wet, dry, preaction or deluge systems

Comparable mechanical strength to Schedule 40

Readily paintable galvanized exterior

Reduces freight and installation costs

TECHNICAL DATA

| NPS | NOM ID | WT./FT. (LBS.) | WT./FT. H ₂ O FILLED | PCS./LIFT | WT./LIFT 21' | WT./LIFT 24' | WT./LIFT 25' |
|-----|--------|----------------|---------------------------------|-----------|--------------|--------------|--------------|
| 1 | 1.103 | 1.370 | 1.701 | 91 | 2618 | 2992 | 3117 |
| 1¼ | 1.448 | 1.761 | 2.365 | 61 | 2256 | 2578 | 2686 |
| 1½ | 1.688 | 2.033 | 2.875 | 61 | 2604 | 2976 | 3100 |
| 2 | 2.153 | 2.686 | 4.142 | 37 | 2087 | 2385 | 2485 |

SPECIFICATIONS

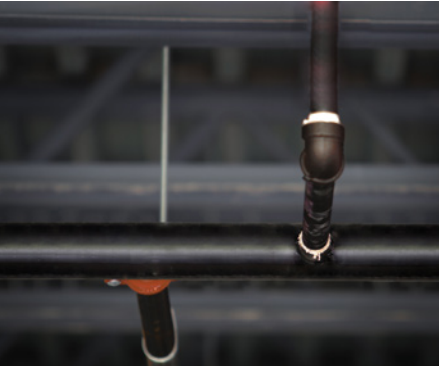
| NPS | NOM ID | | UL THREADED CRR* | | | GL | |
|-----|--------|-------------|------------------|-------------|-------------|-----------------|-----------|
| | GL | Schedule 40 | GL | Schedule 40 | Mega-Thread | Nominal wt./ft. | Pcs./Lift |
| 1 | 1.103 | 1.049 | 0.61 | 1.00 | 1.00 | 1.370 | 91 |
| 1¼ | 1.448 | 1.380 | 0.39 | 1.00 | 1.00 | 1.761 | 61 |
| 1½ | 1.688 | 1.610 | 0.31 | 1.00 | 1.00 | 2.033 | 61 |
| 2 | 2.153 | 2.067 | 0.25 | 1.00 | 1.00 | 2.686 | 37 |

* Calculated using Standard UL CRR formula, UL Fire Protection Directory, Category VIZY. The CRR is a ratio value used to measure the ability of a pipe to withstand corrosion. Threaded Schedule 40 steel pipe is used as the benchmark (value of 1.0).

GL Meets or Exceeds These Standards:

- ASTM A795, Type E, Grade A for fire sprinkler applications up to 300 psi working pressure
- UL and C-UL Listed and FM Approved for wet, dry, preaction and deluge sprinkler systems
- Threaded and welded fittings are approved in accordance with NFPA 13

MLT Black, Light Wall, Threadable



A smooth, customized look

Wheatland's MLT is a black-coated, light-wall engineered product, with a nominal OD and reduced wall thickness that provide improved hydraulics.

TECHNICAL DATA

| NPS | NOM ID | WT./FT. (LBS.) | WT./FT. H ₂ O FILLED | PCS./LIFT | WT./LIFT 21' | WT./LIFT 24' | WT./LIFT 25' |
|-----|--------|----------------|---------------------------------|-----------|--------------|--------------|--------------|
| 1 | 1.103 | 1.370 | 1.701 | 91 | 2618 | 2992 | 3117 |
| 1¼ | 1.448 | 1.761 | 2.365 | 61 | 2256 | 2578 | 2686 |
| 1½ | 1.688 | 2.080 | 2.875 | 61 | 2604 | 2976 | 3100 |
| 2 | 2.153 | 2.630 | 4.142 | 37 | 2087 | 2385 | 2485 |

Ideal for previously installed systems and expansions

Saves freight and installation costs

As mechanically strong as Schedule 40 pipe

Easily paintable for a customized look

Can be used in wet, dry, preaction and deluge systems

Can be joined with threaded couplings, roll grooved or plain-end couplings, or welded

SPECIFICATIONS

| NPS | NOM ID | | UL THREADED CRR* | | | MLT | |
|-----|--------|-------------|------------------|-------------|-------------|-----------------|-----------|
| | MLT | Schedule 40 | MLT | Schedule 40 | Mega-Thread | Nominal wt./ft. | Pcs./Lift |
| 1 | 1.103 | 1.049 | 0.61 | 1.00 | 1.00 | 1.370 | 91 |
| 1¼ | 1.448 | 1.380 | 0.39 | 1.00 | 1.00 | 1.761 | 61 |
| 1½ | 1.688 | 1.610 | 0.31 | 1.00 | 1.00 | 2.033 | 61 |
| 2 | 2.153 | 2.067 | 0.25 | 1.00 | 1.00 | 2.686 | 37 |

* Calculated using Standard UL CRR formula, UL Fire Protection Directory, Category VIZY. The CRR is a ratio value used to measure the ability of a pipe to withstand corrosion. Threaded Schedule 40 steel pipe is used as the benchmark (value of 1.0).

MLT Meets or Exceeds These Standards:

- ASTM A795, Type E, Grade A for fire sprinkler applications up to 300 psi working pressure
- UL and C-UL Listed and FM Approved for wet, dry, preaction and deluge sprinkler systems
- Threaded and welded fittings are approved in accordance with NFPA 13



700 South Dock Street
Sharon, PA 16146

800.257.8182
info@wheatland.com
wheatland.com



Corporate Office

227 West Monroe Street
Suite 2600
Chicago, IL 60606

312.275.1600
info@zekelman.com
zekelman.com

About Wheatland Tube

Wheatland Tube, a division of Zekelman Industries, produces a wide range of steel tubular products, including standard steel pipe, galvanized mechanical tubing, fence framework, fire sprinkler pipe, electrical conduit, elbows, couplings and nipples.

For more information, contact Wheatland Tube at:

800.257.8182 or **info@wheatland.com**

Or, visit our website at wheatland.com

Follow us on:



twitter.com/WheatlandTube



linkedin.com/company/zekelman-industries



youtube.com/ZekelmanIndustries



wheatland.com/blog