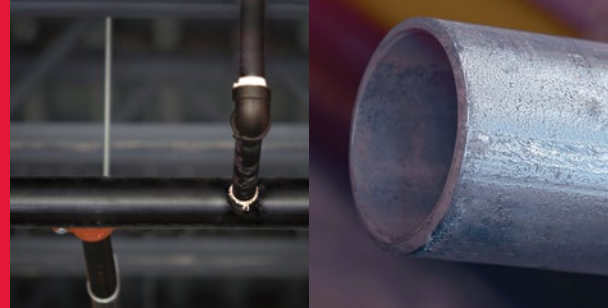


Fire Sprinkler Pipe

MLT Black, Light Wall, Threadable
and GL Galvanized, Light Wall, Threadable

Submittal Data Sheet



FM Approved and Fully Listed Sprinkler Pipe

Wheatland's MLT and GL steel fire sprinkler pipe are FM Approved for wet systems and are UL, C-UL and FM Listed for wet, dry and preaction deluge systems.

Approvals and Specifications

Both products meet or exceed the following standards:

- ASTM A795, Type E, Grade A for fire sprinkler applications up to 300 psi working pressure
- Threaded and welded fittings are approved in accordance with NFPA 13

Manufacturing Protocols

MLT and GL are subjected to the toughest possible testing protocols to assure the highest quality and long-lasting performance.

Finishes and Coatings

MLT is black-coated, easily paintable for a customized look, and is easier and safer to weld than zinc-coated pipes. GL is galvanized and readily paintable.

Product Marking

Each length of Wheatland fire sprinkler pipe is continuously stenciled to show the manufacturer, type of pipe, grade, size and length. Barcoding is acceptable as a supplementary identification method.

MLT SPECIFICATIONS

NPS	NOM ID		UL THREADED CRR*			MLT	
	MLT	Schedule 40	MLT	Schedule 40	Mega-Thread	Nominal wt./ft.	Pcs./Lift
1	1.103	1.049	.61	1.00	1.00	1.370	91
1¼	1.448	1.380	.39	1.00	1.00	1.761	61
1½	1.688	1.610	.31	1.00	1.00	2.033	61
2	2.153	2.067	.25	1.00	1.00	2.686	37

* Calculated using Standard UL CRR formula, UL Fire Protection Directory, Category VIZY.

* The CRR is a ratio value used to measure the ability of a pipe to withstand corrosion. Threaded Schedule 40 steel pipe is used as the benchmark (value of 1.0).

GL SPECIFICATIONS

NPS	NOM ID		UL THREADED CRR*			GL	
	GL	Schedule 40	GL	Schedule 40	Mega-Thread	Nominal wt./ft.	Pcs./Lift
1	1.103	1.049	.61	1.00	1.00	1.370	91
1¼	1.448	1.380	.39	1.00	1.00	1.761	61
1½	1.688	1.610	.31	1.00	1.00	2.033	61
2	2.153	2.067	.25	1.00	1.00	2.686	37

* Calculated using Standard UL CRR formula, UL Fire Protection Directory, Category VIZY.

* The CRR is a ratio value used to measure the ability of a pipe to withstand corrosion. Threaded Schedule 40 steel pipe is used as the benchmark (value of 1.0).



SUBMITTAL INFORMATION

PROJECT:

CONTRACTOR:

DATE:

ENGINEER:

SPECIFICATION REFERENCE:

SYSTEM TYPE:

LOCATIONS:

COMMENTS:

MLT

GL