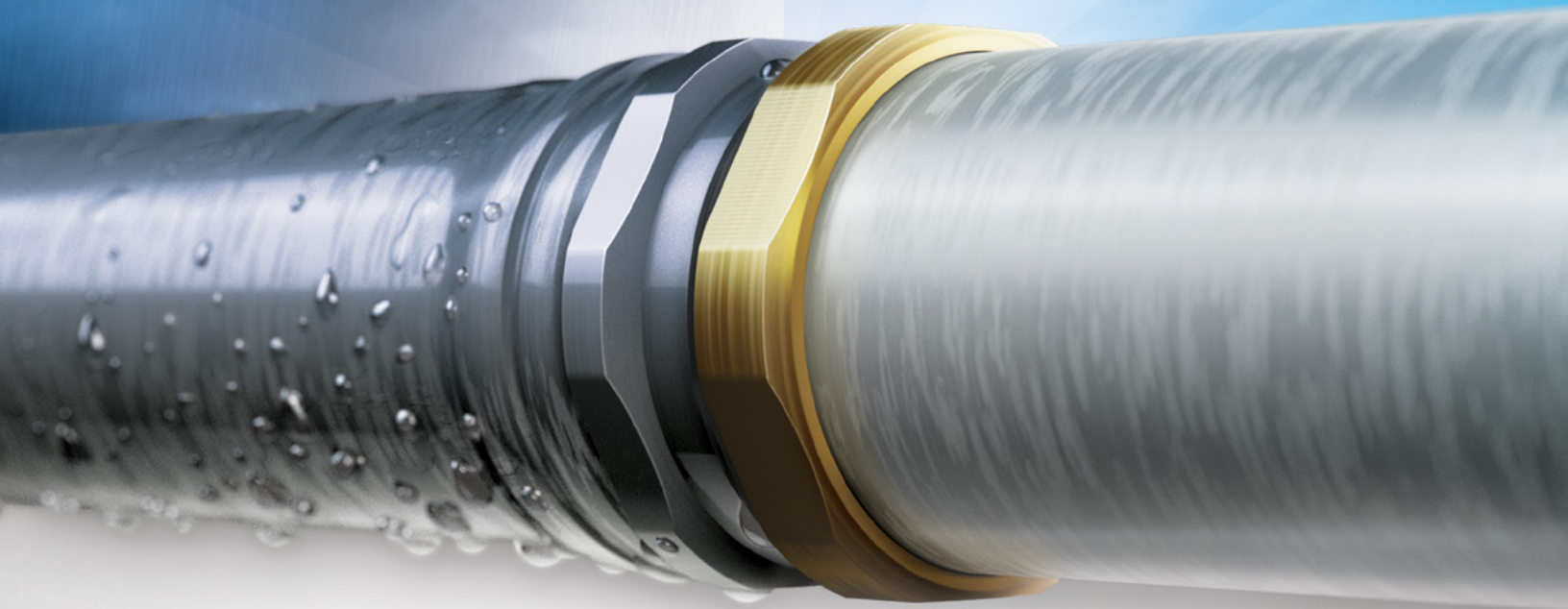


MADE
IN THE USA 

WET OR DRY YOU WIN

with New SmartCompression™ EMT



The Only Pre-installed Raintight Compression Coupling Ensures Faster Project Completion

You're going to start seeing lots of requests and submittal sheets for SmartCompression EMT! That's because it allows for faster completion of any project that calls for compression fittings. Contractors can install SmartCompression EMT 3x faster than standard compression coupling installations. And inspectors can work faster and more confidently, because they know the zinc gold nut means the fitting is raintight and concrete tight. Add UL® Listed SmartCompression EMT from Wheatland Tube to your approved product list today!

AVAILABLE IN: TRADE SIZES 2-4 | 10' & 20' LENGTHS

Learn more about SmartCompression EMT at wheatland.com/youwin

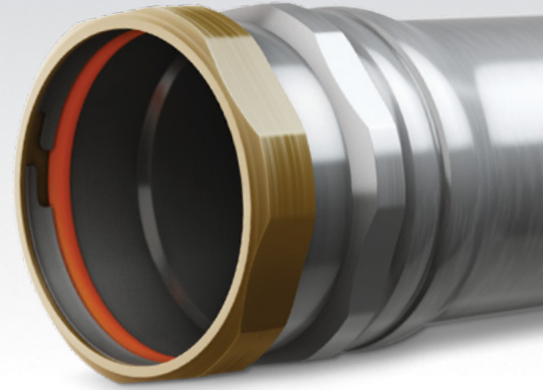


Wheatland Tube
A DIVISION OF ZEKELMAN INDUSTRIES

SmartCompression™ EMT

with the only pre-installed raintight coupling

SmartCompression EMT is galvanized with a clear top coat, and the compression fitting is zinc-electroplated to inhibit corrosion. SmartCompression EMT is ideal for any application where compression fittings are specified or preferred.



SMARTCOMPRESSION EMT WEIGHTS AND DIMENSIONS

TRADE SIZE	OD in.	ID in.	WALL THICKNESS in.	MINIMUM WEIGHT EMT lbs./ft.	COUPLING WEIGHT lbs.	MASTER BUNDLE QUANTITY ft.	MASTER BUNDLE WEIGHT lbs.
2	2.197	2.067	0.065	1.400	0.480	500	723
2½	2.875	2.731	0.072	2.050	1.060	350	757
3	3.500	3.356	0.072	2.500	1.300	300	832
3½	4.000	3.834	0.083	3.250	1.540	250	891
4	4.500	4.334	0.083	3.700	1.790	250	1010

For information only; not a standards requirement.

SmartCompression EMT is produced from FasTrak® Plus EMT, listed to safety standards UL-797 and UL-514B, and manufactured in accordance with ANSI® C80.3.



Watch the video at wheatland.com/youwin

WEL-092617